

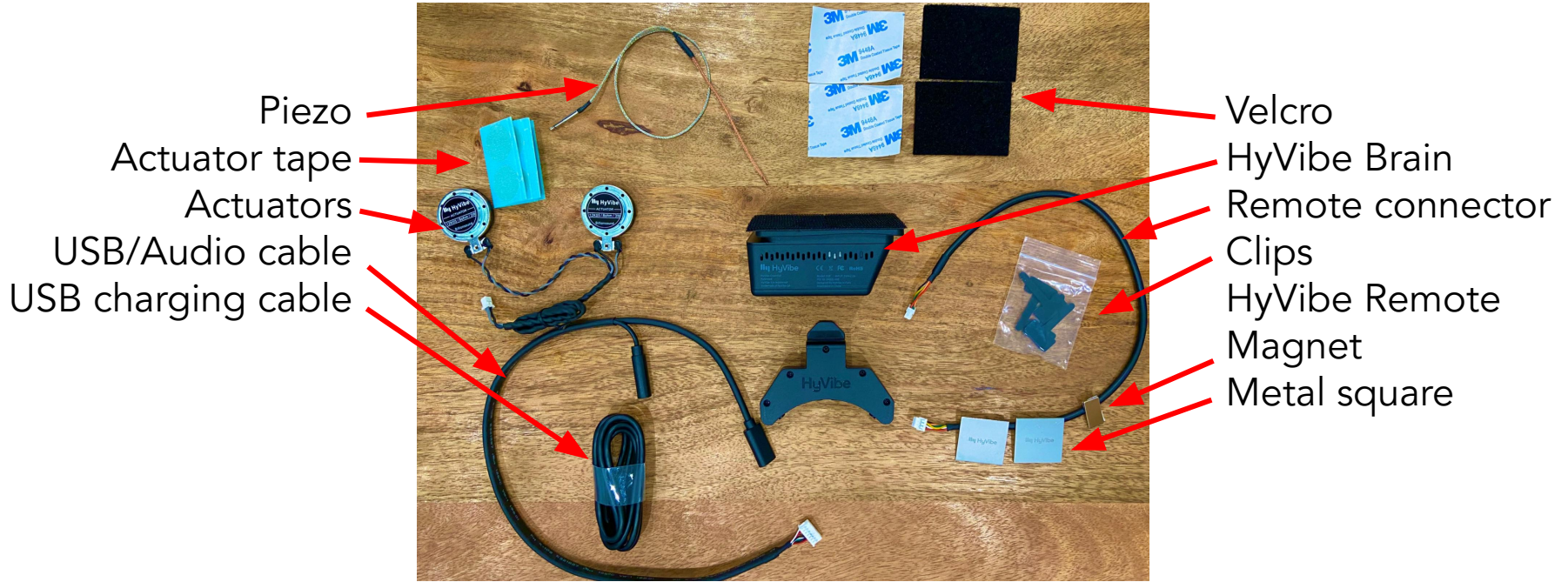


HyVibe H2 Installation Guide





1. Materials





2. Plan component locations

The HyVibe Essential can be installed in several locations depending on which guitar you are using,

Before beginning the installation, we recommend removing the guitar strings and planning where you would like to install these components:

1. Remote (interface inside the soundhole) - able to be installed on the top or bottom of the soundhole. Place the remote inside the soundhole and locate a place where it can be attached to the guitar.
2. The Brain (hub where the cables are plugged into).
3. Magnet to secure the internal USB charging cable.

You can lay out the components and cables on the top of the guitar to simulate the location and see how the cables inside the guitar need to be fastened. An important factor will be which output method you will be using to connect to an amplifier (end pin, cable from soundhole, or jack panel on the bottom of the guitar).





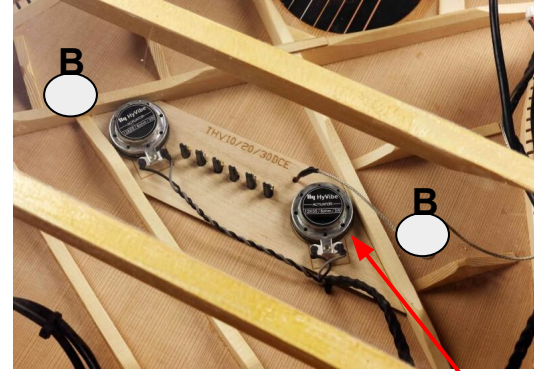
3. Attach actuators

Test that the actuators will fit in the positions as seen in this photo, directly under the bridge of the guitar.

If they do not, then place the actuators outside the X bracing, at the same height as the bridge, and on the same symmetrical horizontal plane (point B). If it is not possible to find a location that meets these criteria, contact us.

Make sure the surface of the wood is clean, remove the adhesive covering from the 3M tape, attach to the to inner ring of the actuator. Remove the other adhesive covering and push them against the wood for ~10 seconds to confirm they are attached strongly.

Make sure that they are arranged so the connector cable is directed to where the HyVibe Brain will be placed inside the guitar.*



*This actuator is attached to the connector cable and must be on the same side as the brain.



4. Install piezo sensor

If your guitar does not already have an undersaddle piezo sensor, follow these steps:

1. Use a 3 mm drill, make a hole for the piezo sensor.
2. Insert the sensor from inside the guitar and lay flat in the saddle.





5. Plug in & attach Remote, metal strip

Plug in the connector cable to the HyVibe Remote before installing it inside the guitar.

Remove adhesive covering on the bottom of the Remote and place it inside the soundhole and press firmly for at least 10 sec.

Attach the metal square inside the sound hole, close to the rim, in the location you simulated in Step 2. We recommend the metal is close to the hole so it is convenient to reach the USB charging cable.

Attach magnet to the USB tip.



Metal square



6. Install endpin (optional output)

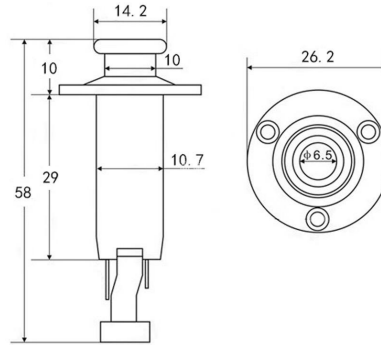
With the HyVibe Essential you have 3 output options: cable through the soundhole, end pin, or jack panel.

To install the end pin jack, drill a 11.75mm to 12mm diameter hole on the button center of the guitar.

Plug the end pin into to audio jack from the sound hole.

Consult a luthier for precise installation instructions.

Size:MM



End pin specs





7. Install output/input/USB panel

Locate the position on the bottom of the guitar where you want to install the output jack panel. Tape the stencil/cut outline in this position or use an adhesive label and draw a 18x44mm rectangle.

Then, using a 6mm drill, drill the 4 corners.

The stencil guide is available here:

<https://www.hyvibeguitar.com/wp-content/uploads/2024/02/H2-Stencil.pdf>



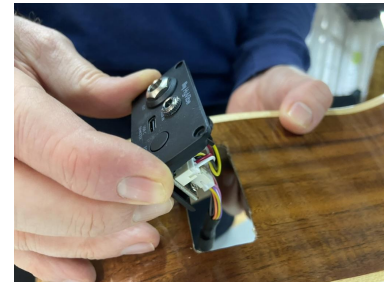
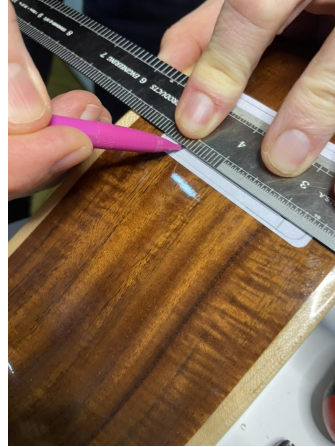


7. Install output jack panel (cont'd)

After drilling the 4 holes cut along the outside border.

Remove the stencil, connect cables to the jack panel, insert the panel into the guitar, and screw the housing into the guitar using the screws.

The panel includes the USB and audio cables. Plug these into the brain as described in the next slide.





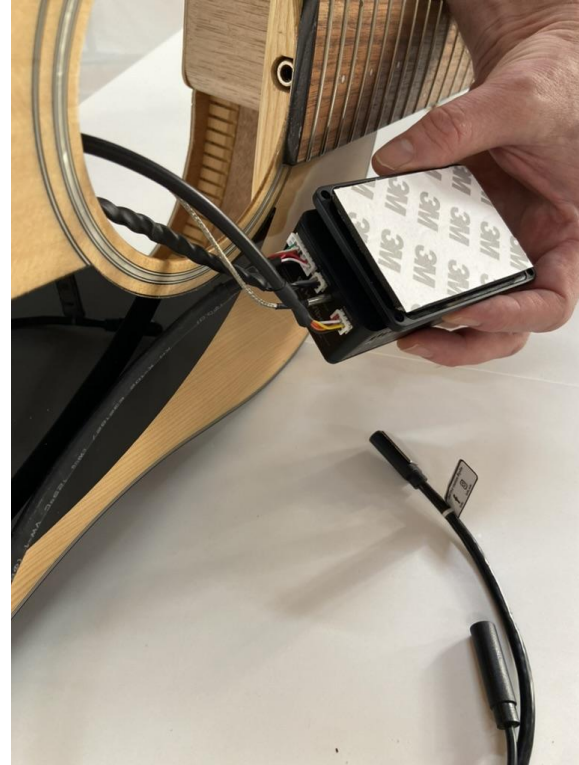
8. Brain assembly

Separate the 3M velcro, remove the adhesive cover of the sheet with the 'soft' side of the velcro and fasten it inside the guitar.

Attached the other velcro sheet to the top of the HyVibe brain, then fasten the brain inside the guitar using the velcro.

Plug the following cables into the brain:

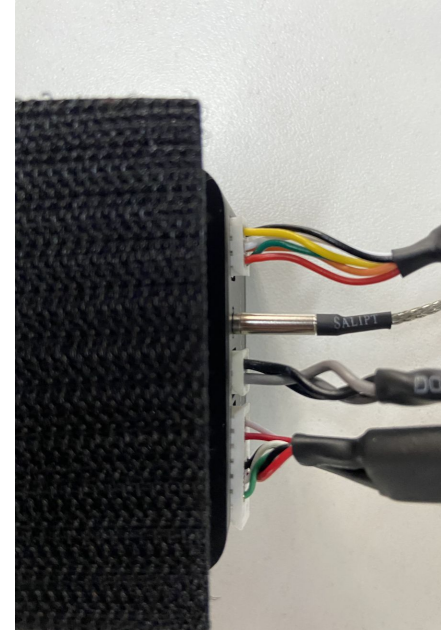
- Piezo
- Actuators
- Remote
- USB/Audio





9. Testing

1. Remote - press button 3 to test that the device turns on.
2. Actuators - place actuators on a flat surface, press the L button, and listen for the metronome count in.
3. USB/audio cable - plug a USB C charging cable into the charging port and confirm the unit is charging.
4. Piezo - turn on the delay effect on the unit and tap the piezo. Listen for the echo sound.



Properly plugged in cables



10. Install Brain

Separate the 3M velcro, remove the adhesive cover of the sheet with the 'soft' side of the velcro and fasten it inside the guitar.

Attached the other velcro sheet to the top of the HyVibe brain, then fasten the brain inside the guitar using the velcro.



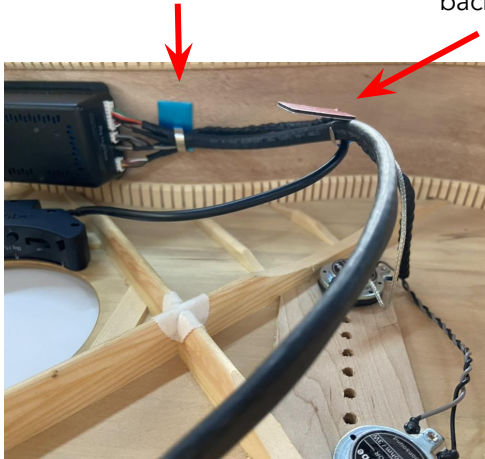


11. Install Clips

Remove the tape cover and fasten the cable clips to the inside of the guitar. They will be used to hold the wires in place against the side of the guitar. These photos illustrate an example of where to fasten the clips to the guitar.

We recommend attaching one clip at a time and fastening the cables before attaching the next clip. To secure the cables to clip, bend the tab.

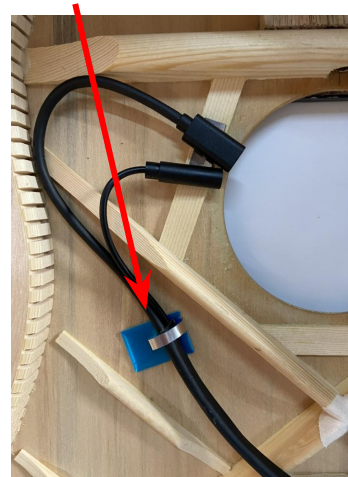
Clip 1 - next to the brain



Clip 2 (red) - cables fastened to the back of the guitar



Clip 3 - audio and USB cables. If needed, you can open the sheathing to adjust the accessibility of the audio & USB cable.



Clip 4 - for endpin/jack panel installation.

