



# HyVibe System Installation Instructions



# Materials:

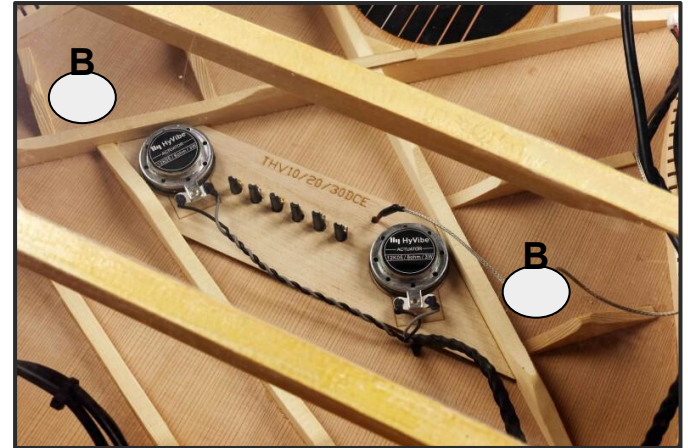
- HyVibe System
- Buffer frame
- Input/output/USB C ports
- Actuators
- Sensor
- Four 2x7, four 2x12 screws
- 2 fastening clips
- Charger
- USB C - USB A cable
- HyVibe blueprint (available online)
- Protection sticker (optional)
- Cyanoacrylate Gel (Loctite super glue)



# 1. Attach actuators:



- Test that the actuators will fit in the positions as seen in this photo, directly under the bridge of the guitar.
- If they do not, then place the actuators outside the X bracing, at the same height as the bridge, and on the same symmetrical horizontal plane (point B). If it is not possible to find a location that meets these criteria, contact us. It may be necessary to cut open the cable sheathing a few centimeters extra in case you need more spacing between the actuators.



- Make sure the surface of the wood is clean, apply glue to the actuators and push them against the wood for ~10 seconds to confirm they are attached strongly. Make sure that they are arranged so the connector cable is directed to where the HyVibe System will be inserted.

# Test actuators before next step



- For safety reasons, it is possible to test the operation of the actuators before making the cutout in the guitar fishplate, which is irreversible.  
To do this, after gluing the actuators, take the wire out through the rosette and connect it to the H1 system. Then turn on the H1, put it in speaker mode and with a telephone broadcast sound into the guitar.
- If the sound is distorted, there is abnormal noises, crackling, it means that there is a problem with the actuators. Check that it is not just the wire touching the wood.  
If the music being played has significant bass, the actuators may overload and appear to be malfunctioning when they are not.
- To be sure, it is preferable to also test the effects: take out the sensor wire also through the rosette and connect it to the H1 in addition to the actuators. Then you have to tighten a string and do an ear test for different effects.

## 2. Install piezo sensor:



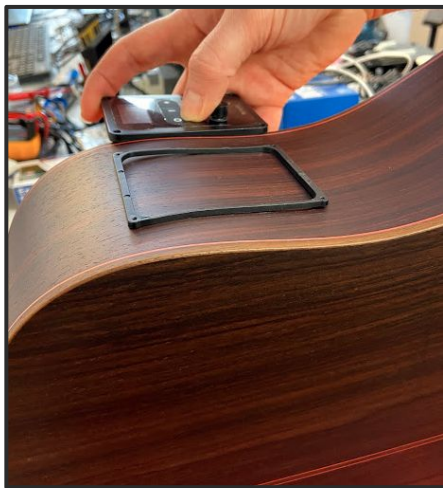
- Using a 3 mm drill, make a hole for the piezo sensor.
- Insert the sensor from inside the guitar and lay flat in the saddle.



### 3. Choose position for HyVibe System



- Using the buffer frame from the HyVibe System to locate the best location to make the installation.
- Mark 4 drill spots: place the HyVibe blueprint in the chosen location, and then indent tiny holes into the wood at each of the four corners of the inner rectangle on the HyVibe blueprint.



## 4. Cut Preamp Hole



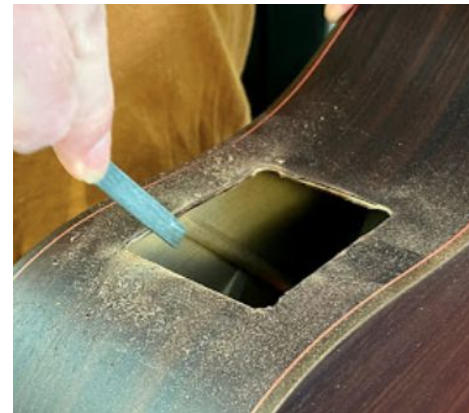
- Drill holes in the 4 corners using a 10mm drill.
- Then use a straightedge and a blade to draw the guide-lines for sawing the outside border.



## 4. **Cut** Preamp Hole (cont'd)



- Cut along the 4 traced sides with a saw and then file/sand the inside edges to smooth them out.

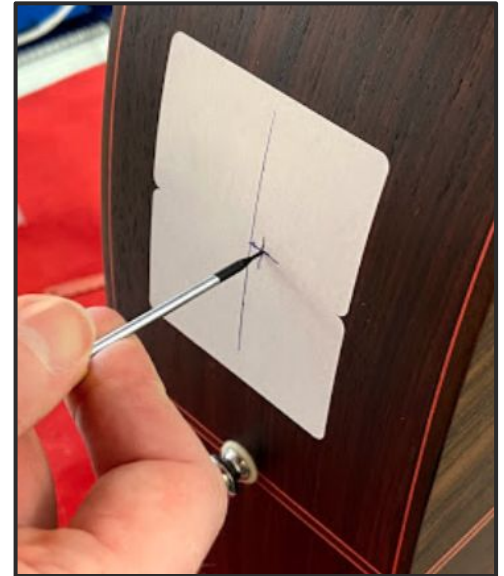
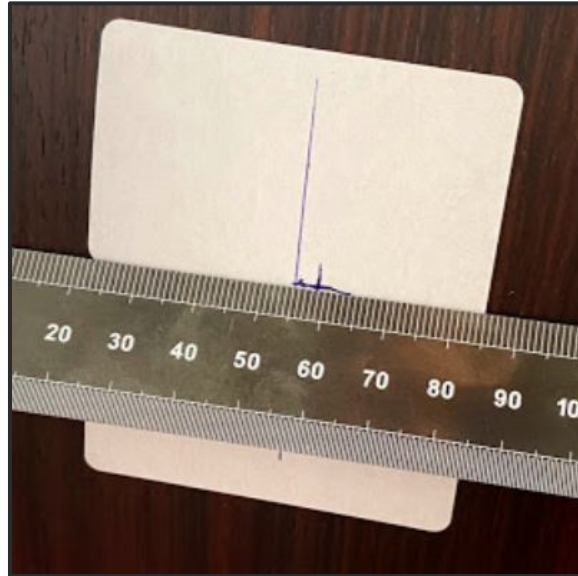




# 5. Install output/input/USB



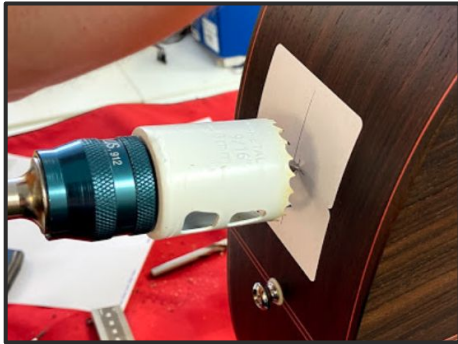
- Place a label on the bottom of the guitar, and use a straightedge to locate a centered location to install the output/input/USB jack.
- Draw a cross to designate the drill spot.



# 5. Install output/input/USB (cont'd)



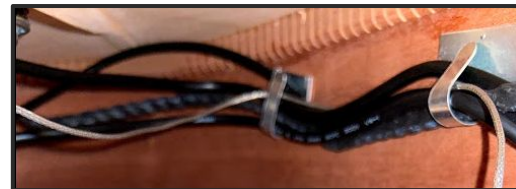
- Drill a 40mm diameter hole (with the label still on the guitar).
- Remove protection label, insert output/input/USB jack, and screw the housing into the guitar using the four 2x7 screws.



## 6. Install clips

- Remove the tape cover and fasten 2 clips to the inside of the guitar\*. They will be used to hold the wires in place against the side of the guitar. The piezo sensor cable only needs to be in the last clip since the cable is short.
- The first picture illustrates where they should be placed inside the guitar. If using a third clip, it should be placed further towards the bottom of the guitar.
- The second picture shows clips after the wires are fastened later in the installation process.

*\*You can also use an extra clip or adhesive to secure the input/output cables to the bottom of the guitar.*



# 7. Prepare to install HyVibe System



The cables must be plugged into the HyVibe System after it is resting in the pre-amp hole. We highly recommend practicing inserting all of the connector cables with the device outside the hole. This will make you familiar with how to do it when you don't have a full view.

We recommend this order for plugging in the wires:

1. Actuators (braided cord)
2. Input/output (paired wires). The white connectors are directional so they will only fit when the pins are aligned. The cable with the white tape is the Input jack cable and goes in the Input port on the HyVibe System.
3. USB C
4. Piezo sensor



# 8. Install HyVibe System



- After becoming familiar with how to connect the wires, place your hand in guitar from the main soundhole, and hold the cables in place.



- Insert the HyVibe System in the preamp hole and connect the wires with your hand inside the guitar. After being properly plugged, the wires will look like the picture below:



## 9. **Fasten** wires to clips



- Put your hand inside the sound hole and affix the wires inside the clips, as shown in this picture.
- Make sure the wood is clean before you affix the clips to the guitar.



# 10. Test and fasten



Before fastening the HyVibe System into the guitar, we recommend testing that the wires are connected properly. Follow these steps to test:

1. USB charger: Plug in the USB-C charger and look for the flashing white light on the device to show that the system is charging.
2. Actuators: Turn on the HyVibe System by pressing rotary knob, and enter Metronome. Turn on the metronome. If you can hear the metronome, the actuators are plugged in properly.
3. Sensor: Enter System menu on the HyVibe. Press center button and look for 'Lvl in'. Strum guitar loudly. 'Lv in' should be between -6 and -3. If it is lower, then increase the PA gain (default 34).
4. Output: Turn the guitar on, plug into an amplifier to test that the output is properly connected.
5. Input: Plug a ¼" cable from the output jack into the input jack. Turn on the metronome. If metronome can be heard coming from the guitar, the Input connector is in properly plugged in.

If the wires are connected and the HyVibe System is working, finish the installation by securing it to the guitar with four 2x12 screws.



# You are now ready to Vibe

Visit [www.hyvibeguitar.com](http://www.hyvibeguitar.com) for all your HyVibe resources & instructions.

Email us: [contact@hyvibe.audio](mailto:contact@hyvibe.audio) if you have any questions.

Download the HyVibe Mobile App here:

